

**Key Plan**  
Scale = 1:25,000

**LEGEND:**

- SMF - Standard survey marker found
- ⊙ SMS - Standard survey marker set
- RIBF - Round iron bar found
- IBF - Square iron bar found
- IPF - Iron pipe found
- CALC - Calculated point
- ▲ NBCM - N.B. Co-ordinate Monument
- sq.m. - Square metres
- A - Arc
- R - Radius
- Rad.Pt. - Radius point
- Line not to scale
- PID - Parcel identifier number
- NBHPN - New Brunswick High Precision Network Station
- NBCM-KQR-HPN - NBCM with HPN values as determined by Kierstead Quigley & Roberts Ltd.
- Tabulated co-ordinate reference
- A.N.B.L.S. - Association of N.B. Land Surveyors

**NOTES:**

1. Azimuths and Co-ordinate values refer to the NEW BRUNSWICK GRID CO-ORDINATE SYSTEM (HPN) and were derived from the tabulated New Brunswick Co-ordinate Monuments and GPS observations. Computations performed and co-ordinate values shown are based on the New Brunswick Stereographic Double Projection and the NAD83 (GSR8) ellipsoid.
2. Azimuths are rounded to the nearest 10 seconds.
3. Distances are in METRES and are rounded to the nearest CENTIMETRE.
4. Lands dealt with by this plan are bounded thus
5. Peripheral information and adjacent names were derived from various sources and should be verified.
6. All plans and documents referenced are recorded in the Registry Office of the County of Kings.
7. Field survey was completed in January, 2010.
8. Temporary turnaround is for the purpose of public turning and municipal maintenance equipment turning until such time as the public street is extended.

**PURPOSE OF PLAN:**

- To vest 2 new public streets
- To create 14 residential building lots
- To vest new Public Utility Easements
- To create a parcel for Land For Public Purposes

A.M.H. Properties Ltd.  
PID 30245112  
Document 27212258

A.M.H. Properties Ltd.  
PID 30245112  
Document 27212258

A.M.H. Properties Ltd.  
PID 30245112  
Document 27212258

REGISTRATION:

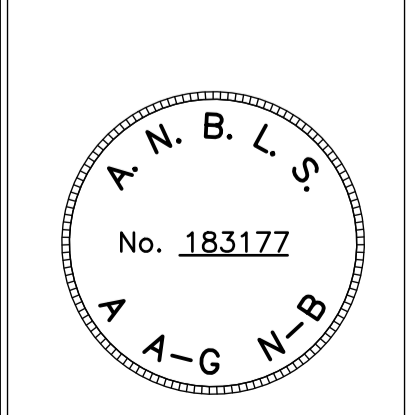
REGISTRATION:

APPROVALS:

Curve Data Table						
Point	Point	Arc	Chord	Chord Azimuth	Radius	Rad.Pt.
10	11	22.37	22.08	135°40'00"	40.00	50
11	12	20.29	20.07	166°13'10"	40.00	50
49	77	21.33	20.33	150°12'00"	20.00	50

New Brunswick Grid Co-ordinate Values (HPN)							
Point	Eastings	Northings	Remarks	Point	Eastings	Northings	Remarks
3	2551684.660	7391397.308	SMS	50	2551579.507	7391326.474	Rad.Pt.
4	2551666.568	7391365.520	SMS	55	2551418.293	7391441.245	SMS
6	2551512.647	7391410.554	SMS	68	2551378.308	7391487.016	SMS
7	2551344.828	7391392.238	SMS	69	2551406.553	7391470.940	SMS
8	2551570.900	7391377.398	SMS	70	2551434.798	7391454.863	SMS
9	2551596.973	7391362.558	SMS	71	2551397.148	7391520.118	SMS
10	2551599.293	7391361.237	CALC	72	2551453.551	7391487.811	SMS
11	2551614.721	7391345.446	SMS	73	2551399.991	7391409.089	SMS
12	2551619.503	7391325.950	SMS	75	2551368.414	7391469.635	CALC
17	2551667.116	7391325.327	SMS	77	2551599.505	7391326.212	CALC
18	2551661.876	7391368.190	SMS	1569	2551265.242	7391594.544	SMF
22	2551615.275	7391394.714	SMS	1579	2551425.478	7391504.267	SMF
23	2551589.202	7391409.554	SMS	1675	2551531.563	7391484.547	SMS
25	2551563.129	7391424.393	SMS	7064	2551684.051	7391355.569	SMF
31	2551495.163	7391420.505	SMS	7066	2551454.875	7390946.299	SMF
32	2551462.991	7391438.817	SMS	9004	2551557.429	7391427.637	SMF
33	2551481.538	7391471.404	SMS	9130	2551575.550	7391459.522	RIBF
35	2551556.426	7391320.050	SMS	9154	2551549.047	7391474.601	SMS
36	2551574.729	7391352.206	SMS	9156	2551530.935	7391442.734	SMS
37	2551548.656	7391367.046	SMS	9182	2551513.458	7391452.692	SMS
38	2551530.354	7391334.890	SMS	1195	2547599.609	7389106.630	NBHPN
39	2551504.281	7391349.730	SMS	1321	2552406.645	7391859.134	NBCM-KQR-HPN
40	2551522.584	7391381.886	SMS	1327	2551221.246	7391901.686	NBCM-KQR-HPN
41	2551496.511	7391396.726	SMS	21353	2552480.997	7391990.410	NBCM-KQR-HPN
42	2551478.209	7391364.569	SMS	21468	2552070.908	7390164.928	NBCM-KQR-HPN
43	2551452.136	7391379.409	SMS	26910	2553357.334	7391302.826	NBCM-KQR-HPN
44	2551470.438	7391411.565	SMS				
45	2551444.366	7391426.405	SMS				
46	2551426.063	7391394.249	SMS				
49	2551589.400	7391343.856	SMS				

Scale Factor = 1.000000



**LAND TITLES DATA:**  
PID 30245112

Owner: A.M.H. Properties Ltd.  
Document: 27212258  
Registered: 2009-05-29

**SIGNATURE OF OWNER:**  
Andrea Hughes - President for A.M.H. Properties Ltd.

**REGISTRATION DATA:**  
PID 30056008 (Portion of Public Street - Clover Lane)

Owner: Town of Hampton (Future Street)  
Plan Number 8608  
Registered: July 17, 1985

**SIGNATURE OF OWNER/AGENT:**  
Megan O'Brien-Harrison, Town Clerk

**PUBLIC UTILITY EASEMENTS:**  
Public Utility Easements

These easements vest in Bell Alliant Regional Communications, Limited Partnership and the New Brunswick Power Distribution and Customer Services Corporation pursuant to Section 56(4.02) of the Community Planning Act and Regulation 84-217. The easements shown on this plan conform to the requirements of the following Utility Companies:

For Bell Alliant Regional Communications, Limited Partnership

For The New Brunswick Power Distribution and Customer Services Corporation

Subdivision Plan  
Orchard Hills Subdivision  
Phase 2  
Town of Hampton  
Kings County, N.B.

Scale = 1:500

**KIERSTEAD QUIGLEY and ROBERTS Ltd.**  
Saint John, New Brunswick

Dated: January 5, 2010  
Steven R. Saunders, NBSL #352

Job No. 08-0070  
Book 374  
Dwg. No. D-180